



THE UNIVERSITY  
of EDINBURGH



# The E5 Doctoral Training Programme Application and Selection Process

Nicola Drago Ferrante & Seb Hennige  
20 November, 2025

**EDINBURGH**  
extraordinary futures await





# The E5 DTP

Edinburgh Earth, Ecology and Environment Engagement Doctoral Training Partnership

Hosts:

Sebastian Hennige- E5 DTP Director

Nicola Drago Ferrante – E5 DTP Manager

Session begins at 15:30 hrs GMT



THE UNIVERSITY  
of EDINBURGH

Open to  
the world





## Our DTPs

**Funded by The Natural Environment Research Council (NERC)  
Edinburgh has over 10 years' experience of running DTPs**

DTP	Years active	NERC funded studentships per year	Total students supported
E3	2014 – 2018	15	117 students
E4	2019 – 2024	17	127 students
E5	2025- 2028	13	19 student (first cohort, 2025)

**Match funding from our hosting schools allows us to increase our overall cohort size**



THE UNIVERSITY  
of EDINBURGH



Natural  
Environment  
Research Council



**EDINBURGH**  
extraordinary futures await

# E5 DTP Partners

## COLLABORATIVE PARTNERS

### Centres of excellence

Edinburgh Centre for Parallel Computing  
National Centre for Atmospheric Science  
National Centre for Earth Observation

### Data-driven entrepreneurship

Bayes Centre  
Edinburgh Climate Change Institute  
Edinburgh Innovations

**Public engagement**  
Dynamic Earth

**Industry**  
Earthwave  
Space Intelligence  
Space Scotland  
Telespazio

### Public bodies

NatureScot  
Scottish Environmental Protection Agency

### Conservation charities

British Trust for Ornithology  
National Trust for Scotland  
Royal Society for the Protection of Birds  
Scottish Wildlife Trust

## HOSTING PARTNERS

### Academic

UoE School of GeoSciences **project lead**  
UoE School of Biological Sciences  
UoE School of Chemistry  
UoE School of Engineering  
UoE School of Informatics  
UoE School of Mathematics  
UoE School of Physics & Astronomy  
UoE School of Veterinary Studies  
Scotland's Rural College (SRUC)

### Non-Academic

British Geological Survey  
National Museums Scotland  
National Physical Laboratory  
Royal Botanic Garden Edinburgh  
Scottish Association for Marine Science  
Scottish Universities Environmental  
Research Centre  
UK Centre for Ecology & Hydrology

**Executive agencies**  
Forest Research  
Met Office

**Consultancy**  
Biomathematics  
and Statistics  
Scotland  
EcoOnline



# What you'll experience as an E5 DTP student

- **Conduct independent research** to make a meaningful contribution to your field of study (leading to submission of a PhD thesis by end of funding)
- **Participate** in research seminars, group meetings, and an active community
- **Build expertise** through cohort-wide and tailored training
- Complete a **3-month Professional Internship Placement**
- **Access** paid teaching and demonstrating opportunities
- Shape your community through **student led initiatives** – Coding Club, Student Advisory Board
- **Engage** in Outreach - (schools, mentoring, science festivals)



THE UNIVERSITY  
of EDINBURGH



**EDINBURGH**  
extraordinary futures await

# Structured Training

60 days of training across the PhD:

- **30 days Core Training-** Cohort based, focussing on transferable skills. Organised by the DTP
- **30 days Advanced Training - P**roject specific, tailored to your individual needs. Organised by the student and supervisor

Training is based around four pillars of development:

1. Training Needs Analysis
2. Core Professional Skills
3. Advanced Research Training
4. Peer Learning and Support

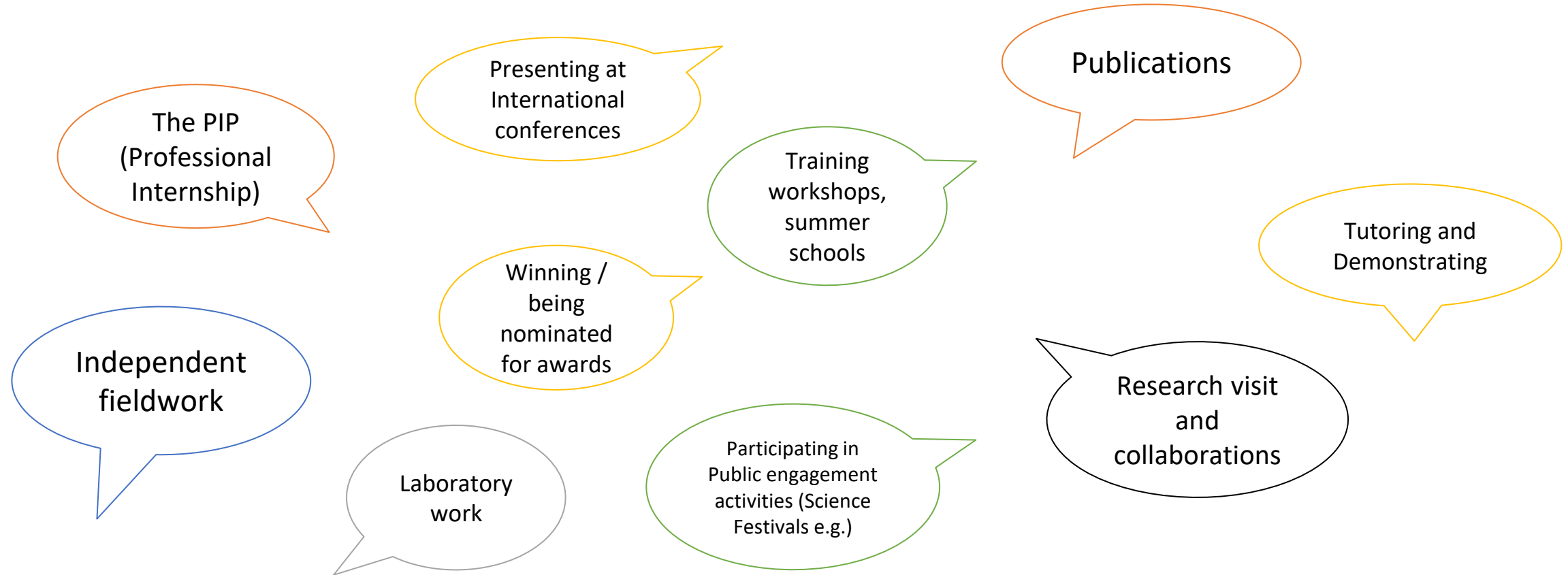


THE UNIVERSITY  
of EDINBURGH



**EDINBURGH**  
extraordinary futures await

# Highlights from our alumni



<https://www.ed.ac.uk/e4-dtp/people/dtp-alumni>



THE UNIVERSITY  
of EDINBURGH



**EDINBURGH**  
extraordinary futures await



# Student destinations after graduation







THE UNIVERSITY  
of EDINBURGH

# Application and Selection Process

Sebastian Hennige  
Nicola Drago Ferrante



**EDINBURGH**  
extraordinary futures await



# The E5 DTP Studentship provides:

## Fully-funded studentships for 4 years

- Stipend paid at the UKRI standard rate (25/26: £20,780)
- Tuition Fees
- Standard Research Costs (minimum £3,450)

### Plus:

- A 3 month Professional Internship Placement (PIP)

Some projects have CASE partners, which include:

Additional placement opportunities and Research Costs to support the project.



THE UNIVERSITY  
of EDINBURGH



Natural  
Environment  
Research Council



EDINBURGH EARTH, ECOLOGY AND ENVIRONMENT  
ENGAGEMENT DOCTORAL TRAINING PARTNERSHIP

EDINBURGH  
extraordinary futures await



# UKRI Eligibility Criteria

Application deadline is  
14<sup>th</sup> December 2025 for  
entry in Autumn 2026

Applications are split into two  
different fee categories:

## Home fees:

- UK nationals
- EU/ EEA with settled/ pre settled status or
- Indefinite leave to remain in the UK (3 -year residency required)

**International fees:** all other categories

We welcome applications from talented individuals  
regardless of nationality or country of residence



## International students

- Admission for international students is very competitive
- UKRI limit the number we can recruit to a **maximum** of 30% international students per cohort.



THE UNIVERSITY  
of EDINBURGH



Natural  
Environment  
Research Council



EDINBURGH  
xtraordinary futures await

# Entry Requirements

Application deadline is  
14<sup>th</sup> December 2025 for  
entry in Autumn 2026

## Academic Eligibility:

- Minimum requirement: UK 2.1 honours degree or equivalent

### We will also consider:

- Relevant **work experience**
- **Master's** degree - although this is **not a requirement**



## English language Requirements

### For Non-Native English speakers

We accept degrees that are entirely taught and assessed in English if:

- The degree is no more than 3.5 years at the programme start date
- The degree was completed in a majority English speaking country or at an approved university in a non- majority English Speaking country
- Accepted English Language Tests and minimum scores are listed on the [University of Edinburgh website](#)



THE UNIVERSITY  
of EDINBURGH



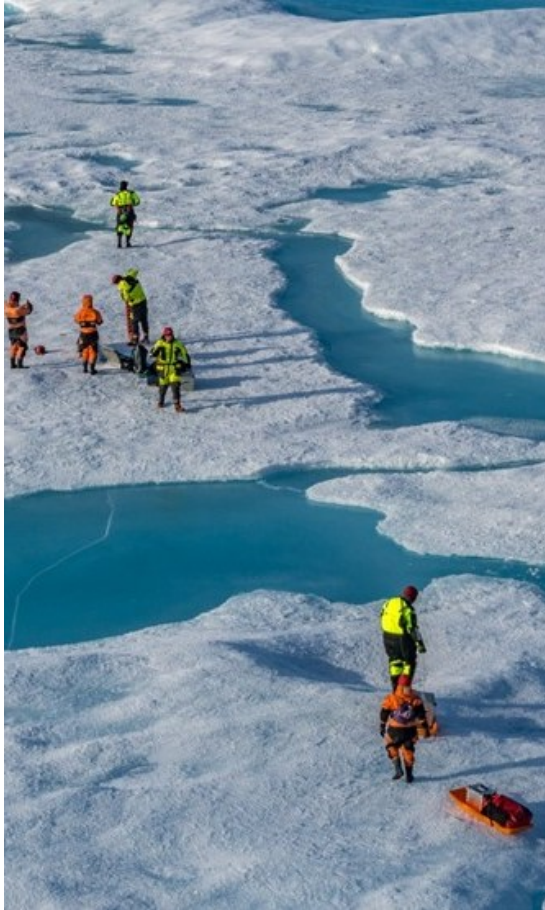
Natural  
Environment  
Research Council



EDINBURGH  
extraordinary futures await



# E5 Widening Participation Scheme



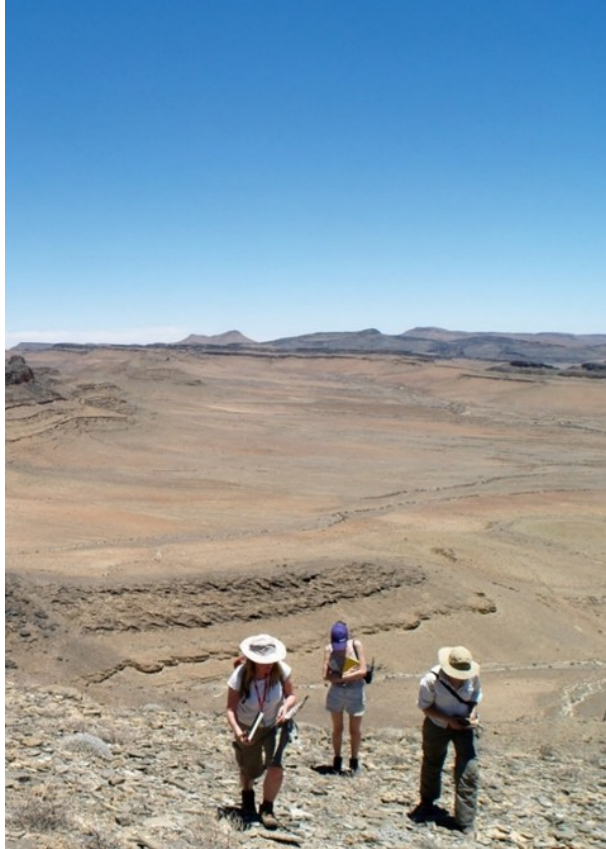
Applicants whose academic journey has been disadvantaged or disrupted may choose to complete the **Widening Participation form**

- This form allows you to tell us about circumstances that have affected your route into higher education
- **Optional**
- All information is **Confidential** and reviewed only by the Widening Participation Panel.

Disclosing special circumstances to the supervisors/selection panel  
If you wish to disclose information to the supervisors/selection panels in order for them to take it into consideration when assessing your application, there is a space to do so on the application form

# Two Application routes

Application deadline is  
14<sup>th</sup> December 2025 for  
Autumn 2026 entry



## Supervisor-led Projects

- Over 80 projects advertised this year
- Cover a wide range of research areas within **NERC-remit**
- Browse online at: [E5 DTP Supervisor-led Projects | The University of Edinburgh](#)
- Next steps: **Contact the main supervisor as early as possible** to discuss your application

You can  
apply to 1  
project in  
total

## Student-led Projects

- Develop a project in collaboration with a supervisor
- Identify a supervisor willing to support you
- The supervisor submits the project on your behalf by 21<sup>st</sup> November 2025.
- If approved, you will be sent a link to apply directly



THE UNIVERSITY  
of EDINBURGH



Natural  
Environment  
Research Council



EDINBURGH  
extraordinary futures await



# Compile your Application Materials

## Compulsory Documents (for all applicants)

- **E5 DTP Application form**
- **Academic CV – max 2 pages**
- **Transcripts and certificates of all completed UG and PG degrees - an interim transcript is acceptable if you are still studying)**
- **Equality and Diversity Form**

## Optional Documents (depending on circumstances)

- **Widening Participation Form**
- **English Language Test certificate (not essential until offer stage)**
- **Proof of your Immigration status for students who are applying as a **Home student** – evidence of EU Pre or Settled status or Right to Remain in the UK)**

Application deadline is  
14<sup>th</sup> December 2025 for  
Autumn 2026 entry

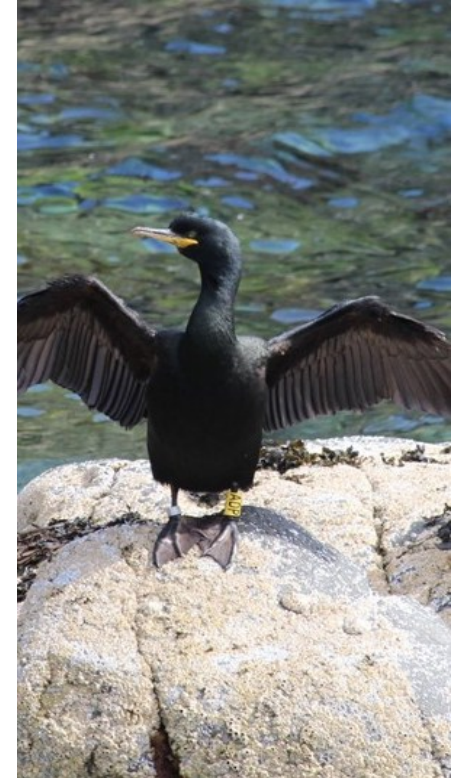
# Create your account on the E5 Portal

All application materials, including your references, are submitted through the online Applicant Portal.

1. Click on **"Apply for this project"** at the bottom of the project you are interested in
2. **Register** with your name and email (or log in with Ease if you already have a UoE account)
3. Check your email inbox for a **link to access your portal**
4. **Upload your application documents**
5. **Enter your referees' contact details** – They will be emailed automatically
6. You can edit your application and make changes up until the closing date

Use your Applicant portal (same link) to:

- Check that your references have been submitted.
- Replace any documents already submitted (if necessary).
- Change the name of a referee (if necessary).
- Check any messages from the admissions team



THE UNIVERSITY  
of EDINBURGH



Natural  
Environment  
Research Council



EDINBURGH  
extraordinary futures await



# Applicant Portal

Complete your details and  
upload your documents

Application deadline is  
14<sup>th</sup> December 2025 for  
Autumn 2026 entry

APPLICATION DOCUMENT PORTAL

- Download the E5 Application Form to your browser's default folder ([https://www.geos.ed.ac.uk/phds/static/E5DTP\\_Application\\_Form.pdf](https://www.geos.ed.ac.uk/phds/static/E5DTP_Application_Form.pdf)) Privacy notice
- Download the Equality and Diversity monitoring form ([https://www.geos.ed.ac.uk/phds/static/E5DTP\\_Equality\\_and\\_Diversity\\_Monitoring\\_Form.pdf](https://www.geos.ed.ac.uk/phds/static/E5DTP_Equality_and_Diversity_Monitoring_Form.pdf))
- OPTIONAL: Download the E5 Widening Participation Form ([https://www.geos.ed.ac.uk/phds/static/E5DTP\\_Widening\\_Participation\\_Form.pdf](https://www.geos.ed.ac.uk/phds/static/E5DTP_Widening_Participation_Form.pdf))

## Welcome

Please upload all files in **PDF format where possible**.

After uploading, check each file by clicking the "View" or "Download" button next to the file name. If it opens, it has been successfully uploaded.

Make sure to upload all mandatory documents (CV, application form, transcripts, EDI form). You may make changes to your application at any time before the close of applications, but once you have clicked the 'Submit completed application for review' button, your application is final and cannot be changed.

## View project description:

Upload your application documents

Email

Application Status



You must upload the CV, application form, equality and diversity form and your undergraduate transcript before you can submit the application for review

Project to review

Title

Forename



THE UNIVERSITY  
of EDINBURGH




EDINBURGH  
extraordinary futures await

# Application portal status notifications


Application deadline is  
14<sup>th</sup> December 2025 for  
Autumn 2026 entry

Once you have created your account on the portal, you will see the following banners at the top of your application screen



You must upload the CV, application form, equality and diversity form and your undergraduate transcript before you can submit the application for review

When you have uploaded the compulsory documents, you will be prompted to select the check box



When you are ready to submit your application for review,  
please tick the box on the left and then Save Changes

If you are happy that your application is complete, select the check box and the banner will change to:



Thank you.  
We have received your application.

**Important note - If you need to amend your application once you have selected the check box, you can do so until the closing date**



THE UNIVERSITY  
of EDINBURGH



Natural  
Environment  
Research Council

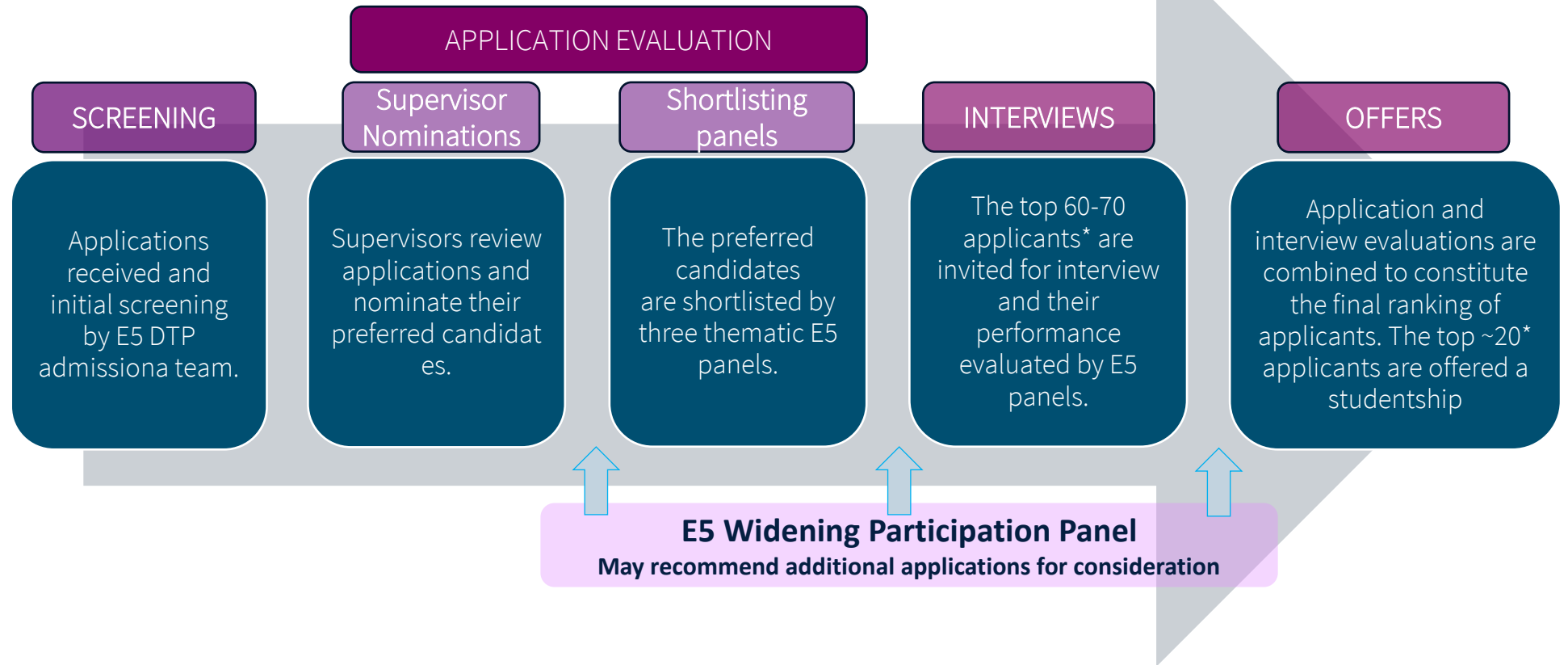


**EDINBURGH**  
extraordinary futures await



# Application Review Process

Application deadline is  
14<sup>th</sup> December 2025 for  
Autumn 2026 entry



THE UNIVERSITY  
of EDINBURGH



**EDINBURGH**  
extraordinary futures await

# Recruitment Timeline 2026 entry

**Application deadline is  
14<sup>th</sup> December 2025 for  
Autumn 2026 entry**

Student-led Projects: Project submission deadline	21st November 2025
<b>Application deadline for all students</b>	<b>14th December 2025 23.59 GMT</b>
Outcome sent via email by the latest	16th February 2026
Interviews	23, 24th and 25th February 2026
First offers sent by	4 <sup>th</sup> March 2026
2026 NERC Universal acceptance of offers date (before which candidates are not obliged to accept any NERC-funded PhD offer)	Mid-March 2026



THE UNIVERSITY  
of EDINBURGH



Natural  
Environment  
Research Council



**EDINBURGH**  
extraordinary futures await



# Application Tips

Application deadline is  
14<sup>th</sup> December 2025 for  
Autumn 2026 entry



## Plan Ahead

- Contact the project supervisor early
- Speak to your referees
- Request official documents early
- Create your account in the applicant portal and upload your documents ahead of the deadline.



## Experience

- **Research experience:** Past projects and skills
- **Professional/Other experience:** Relevant non-academic skills and achievements which you think will be relevant to a PhD
- **Scientific Outputs:** List any publications, including those under review



## Motivation

- Explain why you want this PhD
- Show your interest in the project



## Top Tips

- Tailor your application to the project
- Show enthusiasm and curiosity
- Be clear and concise
- Proofread carefully
- Use your own words!



THE UNIVERSITY  
of EDINBURGH



Natural  
Environment  
Research Council



EDINBURGH  
extraordinary futures await

# Support for Applicants

Application deadline is  
14<sup>th</sup> December 2025 for  
Autumn 2026 entry



## Visit our website for information including:

- [Frequently Asked Questions](#) on each stage of our recruitment process (project choice, application, shortlisting, interview, offer)
- [A day in my PhD Life videos](#) from our students about what a PhD is really like
- [Advice for PhD Applicants](#) video to help you prepare your application
- Online **Applicants Information and Q&A sessions** (recording)



THE UNIVERSITY  
of EDINBURGH



Natural  
Environment  
Research Council



**EDINBURGH**  
extraordinary futures await

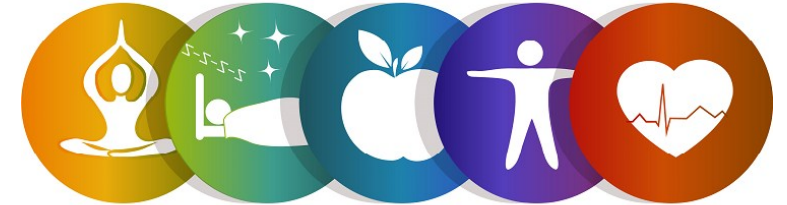


# Student Support Services

## University Student Support Services:

- Health
- Wellbeing and mental health
- Counselling
- Sport and Exercise
- Disability and Learning and Support
- Student Immigration
- Careers
- Institute for Academic Development
- Accommodation
- Student Finance
- Childcare

The Advice Place by EUSA (Edinburgh University Student Association)



# Next steps...

<https://edin.ac/student-chat-pg>



THE UNIVERSITY  
of EDINBURGH

**EDINBURGH**  
xtraordinary futures await



# Contact details for follow-up questions

- We apologise if we did not get through all of your questions in the time allotted for this session. If you have further questions that have not been answered, please email: [futurestudents@ed.ac.uk](mailto:futurestudents@ed.ac.uk)
- *Or, contact us directly at:* [e5dtp.info@ed.ac.uk](mailto:e5dtp.info@ed.ac.uk)

Application deadline:  
**14th December 2025**  
for September 2026 entry



THE UNIVERSITY  
of EDINBURGH

**EDINBURGH**  
extraordinary futures await



THE UNIVERSITY  
*of* EDINBURGH

Application deadline is  
14<sup>th</sup> December 2025 for  
Autumn 2026 entry

# Thank you & good luck with your application!

E5 DTP Admissions Team

[e5dtp.info@ed.ac.uk](mailto:e5dtp.info@ed.ac.uk)

**EDINBURGH**  
xtraordinary futures await

